

④ 国际室内设计年鉴 2009

INTERNATIONAL
INTERIOR DESIGN

2009

张先慧
主编

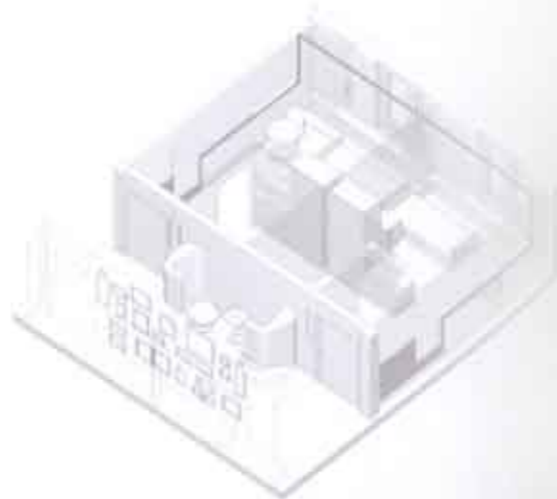
学院社团
INSTITUTION

办公楼
OFFICE
BUILDING

SCHORNDORF的疗养院 NURSING HOME, SCHORNDORF

项目资料:
设计单位: 斯高加特 Ippolito Fleitz Group
合作设计公司: Jousien Karliczek GmbH
设计团队: Peter Ippolito, Gunter Fleitz, Hadi A. Tandawardaja
摄影: Josey Brauh
客户: KSP Kranken und Seniorenpflege GmbH
项目地址: Schlichtener Strasse 105, 73614 Schorndorf, Germany
面积: 1322平方米

Project Information:
Design Unit: Ippolito Fleitz Group, Stuttgart
Partners Corporate Design: Jousien Karliczek GmbH
Design Team: Peter Ippolito, Gunter Fleitz, Hadi A. Tandawardaja
Photographer: Josey Brauh
Client: KSP Kranken und Seniorenpflege GmbH
Project Address: Schlichtener Strasse 105, 73614 Schorndorf, Germany
Size: 1322 m²



项目说明:

这个室内设计的主要目的在于为疗养院的住户营造一个强调个性与独立的空间。设计理念提倡他们的独立性, 同时又能满足年迈者的特殊需求, 即便在疗养院的时候, 住户也能住得尊严而且安全, 有如家一般的感受。

疗养院坐落在单层, 其设计清晰有序。所有的房间都方便轮椅进出, 也很容易找到, 使住户拥有舒适自在的感受是游乐区的设计重点。

多了特别设置的坐凳, 还有可以自由穿梭的走廊, 使整个建筑成了交流沟通的地方。每个壁龛上都安装了两把舒适的椅子, 还配有一张小桌子和一盏桌灯, 斜的半透明的帘布作为掩护, 营造了一种私密的感觉: 这是一个可以私聊和阅读的好地方, 同时又能和外界保持联系。

游乐区是专为满足住户的不同需求而设的: 保有自己的房间和交谊的绝对隐私, 又可以在休闲区的舒适座椅上, 在走廊的有部分隔音功能的坐凳上进行正常的社交, 既可以积极参与饭馆和疗养院的活动, 又可以到阳台呼吸新鲜空气。

在取材和用色方面, 设计师着重营造一种非常温馨舒适的家的氛围。墙壁用浅色涂料粉刷, 配合颜色便于区分的主题, 或用壁纸装饰。像木家具和带有暖色调的橙灰色漆布地毯相辅相成, 传达出一种家的感觉。

整个设计中没有一个居室是相同的。秉持着独立性的理念, 每个居室都有自身的主色调, 墙壁的颜色、主色调和窗帘统一起来, 组合成不同风格的房间。它们在格局和实质上使标准配备看起来更亲切舒适。充裕的储物和储藏空间使人们能多角度展现自己的个性, 所有这些都使得每个房间看起来独一无二。

定位系统沿用了这一理念, 在安排抽象的房间号码的时候, 每个房间都取了恰当的名字, 像城堡、宫殿, 或者家——每个名字都代表了一种生活状态。这些房间按字母表的顺序排列着, 方便人们找到目的地。

每个房间的隔壁都安装了一个架子, 上面有住户的姓名和一两张他们年轻时的照片。通过这种方式将人和地点的关系建立起来, 构筑了一座通往内部与外界、昨天与今天的桥梁。

除了座位区, 还有以整条走廊挂满壁画著称的走廊。超过170张照片被收集起来挂在墙壁上, 这些都是关于住户生活的点滴记录: 从贝多芬到滚石乐队, 装饰画中, 彩票, 诗歌, 旧地图, 明信片、海报、照片, 甚至所有的书籍, 所有种类和数目都代表了住户人生故事的独立与独一无二。看到这些照片, 仿佛你也能亲身走进他们的记忆里, 分享他们的喜怒哀乐, 你会不自觉地联合自己的生活经历, 对你所看到的会心一笑, 或者和他们分享自己的故事。这些收藏会随着住户的变更而不断更换, 照片挂上去又拿下来, 这里永远都有新鲜的事等待你去发现——这是一场“移动”的墙。

这里“高”壁强调了这样一个设计理念: 重视住户的尊严, 自主性和独立性, 也强调沟通。这样疗养院的社区服务性质就会随之减少。



Project Description:

The main objective of the interior design was to create rooms that emphasize the personality and individuality of the nursing home's residents. The design concept promotes their independence, while at the same time responding to the specific needs of elderly people. Even during a stay in a nursing home, its residents should be able to lead a life of dignity and security, and ideally, feel completely at home there.

The home is on a single level that is organized in a clear and structured way. All rooms are wheelchair-accessible and can be easily located in one of the two wings. The spacious recreation areas establish homelike focal points, which support easy orientation.

Thanks to specially-positioned seating niches, the corridors, which would otherwise just be spaces to move through, become communication zones. Each niche is equipped with two comfortable chairs, a small table and a table lamp, and is protected and contained by a tapered, translucent curtain. This creates an island with an almost intimate feel: the perfect retreat for a private discussion or reading a book, while at the same time remaining in contact with the outside world.

Recreation areas are tailored towards residents' different needs: privacy in the surroundings of your own room, communication and taking an active role in public life from the comfortable arm chairs in the recreation areas, passive seclusion in the corridor seating niches or active participation in the restaurant, therapy areas or on the terrace in the fresh air.

The materials and colours concept is designed to create a homelike, non-institutional atmosphere, and also to stimulate. Walls are painted in light tones in accordance with a differentiated colour scheme, or decorated with wallpaper. The oak furniture forms a gentle contrast and conveys a sense of home, which is complemented by the warm, greyish-brown linoleum floor. Recreation areas are highlighted by means of inlaid carpet islands.

No two bedrooms are the same. Keeping with the idea of individualisation, each room has its own palette of colours. Wall colour, accent colour and curtains harmonise to create a new combination and different mood for each room. Their form and materiality make standard fittings appear familiar and comforting. And generous shelving and storage possibilities create numerous ways of customising each room with personal touches and effects. All this serves to make each room unique.

The orientation system picks up on this idea. In place of abstract room numbers, each room bears a proper name: "Castle", "Palace" or "Home" each name referring to some kind of living situation. The rooms are arranged alphabetically to make it easier to find your way around.

A frame is affixed next to the door of each room. This contains the name of the resident and one or two pictures from their past. In this way a relationship between the person and the location is established, creating a bridge connecting inside with outside, yesterday with today.

In addition to the seating islands, the main corridor is characterised by a picture wall that stretches along its entire length. Collective and individual memory fragments from residents' lives are amassed in more than 170 picture frames: record covers from Beethoven to the Rolling Stones, stellas, silhouettes, poems, old maps, postcards, posters, photographs and even whole books. Their sheer variety and number represents the individuality and uniqueness of residents' life stories. To view them is to immerse yourself in the memories of others. You naturally associate your own experiences, smile and exchange stories about what you've seen. At the same time the collection is constantly changing as residents change. Images come and go and there are always new things to discover: the wall keeps on "moving".

The picture wall underscores the design concept: the dignity, individuality and independence of residents is emphasised and communication is fostered so that the institutional character of the nursing home fades almost completely into the background.

