

# DOMESTIC INTERIORS NOW



LINKS

## Wohnung S

Stuttgart, Germany

Interior architects ippolito fleitz group have designed an atelier apartment in an exclusive apartment complex situated in one of Stuttgart's prime residential areas at the foot of the Killesberg. The client is an international graphic designer, who intends to use this apartment as her new base for both her professional and private life. The interior should therefore be an emotional, personal and feminine living space, while at the same time creating room for a clear and focused working environment. The apartment is divided into clear zones, creating private, semi-public and public areas.

Clear-cut cubic forms and the uniform materiality of the smoked oak floor and furnishings used throughout establish the basis for a calm and uncluttered spatial impression. Colors and textiles are used in the different areas to set extra atmospheric accents.

From the entrance two horizontal sideboards run along the long wall into the apartment, thereby creating a visual connection with the balcony beyond. The mirrored wardrobe door to the left of the entrance multiplies this line of sight ad infinitum. The two dark sideboard elements are backlit, creating the impression that they are floating in space in front of the turquoise-colored wall. Incorporating 55 drawers and 12 storage compartments, they offer sufficient storage space to house both tools and the client's archive of work.

The kitchen is located in the very center of the apartment, an idea that perfectly suits the character of the client, who is herself a keen cook and has designed many cookbooks. The concrete work surfaces provide a compelling contrast to the wooden kitchen units. A light patina and slight wear and tear to the work surfaces creates an expected and desired effect that contributes to the kitchen's charm and vibrancy.

A clear sheet of glass separates the kitchen from the dining and workspace. The latter consists of a long upholstered bench, which is directly attached to the back of the freestanding kitchen unit.

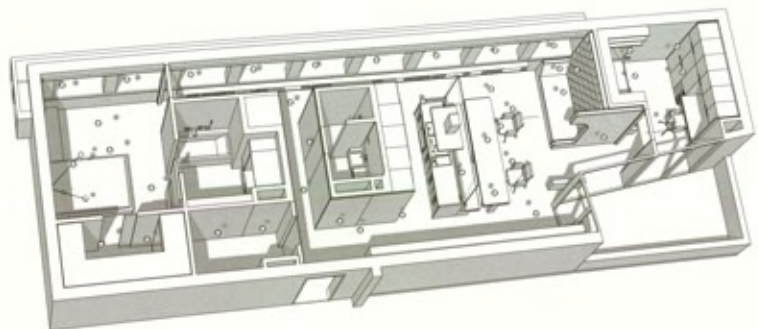
A small connecting corridor connects the two main hallways. This is clad with flush-mounted, bronze-anodized aluminum sheets on both sides. A concealed door leads into the guest bathroom, which offers a special visual experience. The powerful orange of the bathroom walls in combination with the violet ceiling, ceramic washbasin and the dark wood of the bathroom cabinets provides a delightful contrast. An illuminated natural rain shower is set into the ceiling. The shower walls are solid surface from floor to ceiling and are engraved with a selection of quotations selected by the client herself, thus giving the room a very personal note.

A field of flowers was designed by Monica Trenkler to decorate the ceiling and connect all areas of the apartment. In designing the motif, the artist was inspired by the client's own artwork.

Photographs:  
Zoëy Braun

ARCHITECTS:  
Ippolito Fleitz Group  
TEAM:  
Peter Ippolito, Gunter Fleitz,  
Fabian Greiner, Monica Trenkler  
(Ceiling Art)  
PROJECT:  
Wohnung S  
CLIENT:  
N.N.  
LOCATION:  
Stuttgart, Killesberg  
SIZE:  
94 sqm









Anchored on the mauve-colored rear wall in the bedroom, a three-armed Serge Mouille lamp protrudes deep into the room. The head of the bed is covered in the same material used in the seating niche, thereby picking up on the idea of the bedroom as another private retreat.



The spacious bed in the guestroom is enclosed on three sides by white leather chesterfield upholstery. A door leads onto the balcony from this room.

