



MONTREAL°

TORONTO°

CHICAGO°

DETROIT°

NEW YORK°

°BROOKLYN

PHILADELPHIA°

ST LOUIS°

WASHINGTON DC°

BIRMINGHAM°

°CHARLESTON

BIRMINGHAM°

°CHARLESTON

°JACKSONVILLE

HOUSTON°

°MIAMI

°MEXICO CITY

°HAVANNA

PORT AU PRINCE°

°KINGSTON

°NASSAU

°SANTO DOMINGO

°ARUBA

°SAN JUAN

PANAMA CITY°

MARTINIQUE°

BOGOTA°

BOGOTA°

°CARACAS

O.F.D.A. / STUDIO SUMO / WHITE COURT HOUSE / HOLOCAUST EDUCATION CENTER / SUSHI MOTO / bob COORDINATION\_ FRONT DESIGN GROUP / bob COLLECTION\_REAL OFFICE

International Magazine of Space Design

bob043

# JOUSSEN KARLICZEK

**Design**\_Ippolito Fleitz Group **Design team**\_Peter Ippolito, Gunter Fleitz, Silke Hoffmann, Alexander Fehre, Tim Lessmann / Ippolito Fleitz Group **Client**\_Joussen Karliczek GmbH **Location**\_In der alten Lederfabrik Weilerstraße 6/1 73614 Schorndorf, German **Completion**\_Jun. 2007 **Build area**\_434.m<sup>2</sup>  
**Photographer**\_Zoëy Braun **Editor**\_Lee Hae Rin

Agency Joussen Karliczek has moved into new premises in a former leather factory. We have created a working space with its very own look and atmosphere, which inserts itself into the structure of the factory building without detracting from its old-world charm and character, while at the same time offering a self - confident response to our time. Workspaces and conference rooms alternate in the overall layout, resulting in an atmosphere that is simultaneously focused yet relaxed. The rooms, built-in units and mirrors are layered, creating many fascinating perspectives and overlapping effects from different vantage points. As a result, the agency resembles a landscape rather than a fixed space, offering multiple opportunities for creativity at different moments, instead of simply a space that contains desks. Text by Ippolito Fleitz Group

워센 칼리체크 에이전시는 가죽 공장으로 쓰이던 건물 안으로 새로 이전했다. 우리는 이 에이전시를 위해 자기만의 외관과 분위기를 지닌 작업환경을 만들었다. 공장 건물 구조 속에 스스로를 자리매김한 이 새로운 작업환경은 구세계의 매력과 격조를 훼손하지 않는 동시에 우리 시대에 대해서는 자신감으로 화답한다. 전체 배치 상에서 보면 작업공간과 회의실이 번갈아 나타나면서, 집중된 동시에 느즈러진 분위기를 이끌어낸다. 각 실, 불박이 유닛, 거울 등이 레이어를 이루며 시점에 따라 환상적인 조망과 겹치는 효과를 이끌어낸다. 그 결과 워센 칼리체크 에이전시는 고착된 공간이라기보다는 경관을 담았으며, 핵심만 있는 단순한 공간이 아니라 순간순간 창의력을 살려주는 갖가지 기회를 제공한다. 글 : 이폴리토 플라이츠 그룹



General view



Lobby



Agency inserts itself into the structure of the factory

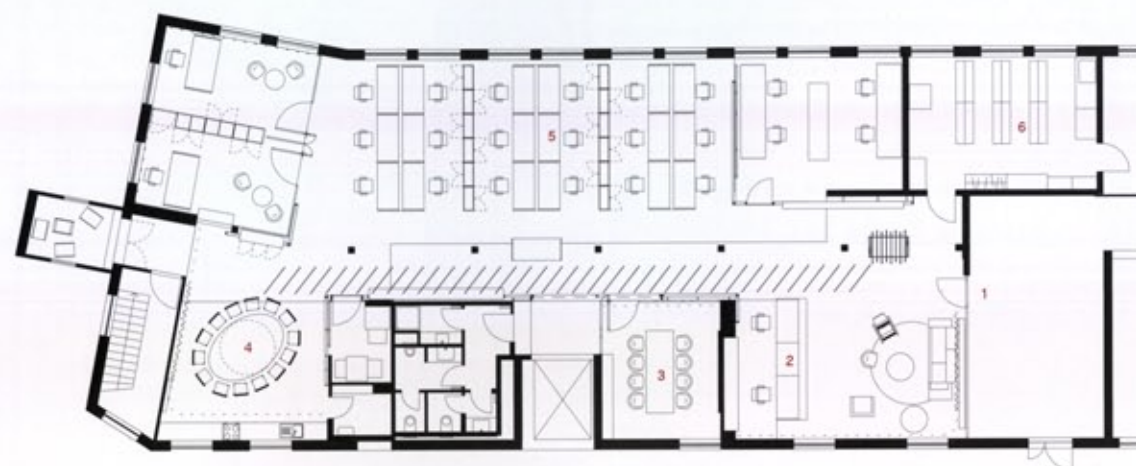


Workspaces and conference rooms alternate in the overall layout



The rooms, built-in units and mirrors are layered

- 1 ENTRANCE
- 2 LOBBY
- 3 CONFERENCE ROOM
- 4 MEETINGROOM
- 5 WORKING SPACE
- 6 LIBRARY



FLOOR PLAN



Meeting room

View of the corridor