

# PARTICIPATE IN THE PROJECT **NEXT** creative generation



ONLINE MAGAZINE about contemporary design, trends and concepts, prototypes and products, interior design and architecture, exhibitions, technology and lifestyle.

subscribe

[home](#) [about us](#) [publication](#) [contact us](#)

SEARCH  GO

## CATEGORY

- ACCESSORIES
- ARCHITECTURE
  - PUBLIC
  - RESIDENTIAL
- AWARDS
  - AIDA 2008
  - RED DOT DESIGN 2008
- BATHROOM
- BLOG DIGEST
- COMPETITIONS
- ECODESIGN
- EXHIBITIONS
  - 100% DESIGN LONDON 2008
  - ABITARE IL TEMPO 2008
  - AMBIENTE FRANKFURT
  - BDW 2008
  - CERSAIE 2008
  - DESIGN MIAMI/BASEL 2008
  - I SALONI MILANO 2008
  - ICFF 2008
  - IMM COLOGNE 2008
  - MACEF
  - ORGATEC 2008
  - STOCKHOLM FAIR 2008
- FURNITURE
  - BEDS
  - CHAIRS & ARMCHAIRS
  - OTHER
  - SOFAS
  - TABLES
- GETAWAY
- HOME DECORATION
- INTERIOR
  - PUBLIC
  - RESIDENTIAL
- INTERVIEW
- KITCHEN
- LIFESTYLE
- LIGHTING
- LUXURY
- NEW FACES
- NEWS&EVENTS
- OFFICE
- OTHER
- OUTDOOR
- PRE-FABRICATED
- PROTOTYPES
- SPEED
- TECHNOLOGY

## TOPVISITED

- [A Legend Of Gold Does Size Matter?](#)
- [Not Another Scruffy Bookstore](#)
- [Dr. Fisher: In a matter of few years, most buildings will be made in factories](#)
- [Half Moon Chair by dodolivin](#)
- [Question Mark Chair with red dot award](#)
- [Multiple Gold for Miele Appliances](#)
- [Harry Wakefield: Design is thought, innovation, creation crystallized in an object](#)
- [Jardin del Sol by Corona y P. Amaral Arquitectos](#)
- [Pastille Footstool by Leolux](#)

## MODERN FURNITURE

**Lighting is modern lighting**  
 Modern Furniture - Leather sofas, modern bedrooms, dining furniture and more. Latest designs, low prices and large stock in USA.  
[Conservatory Furniture](#)

## ARCHIVE

- [OCTOBER 2008](#)
- [SEPTEMBER 2008](#)
- [AUGUST 2008](#)
- [JULY 2008](#)
- [JUNE 2008](#)
- [MAY 2008](#)
- [APRIL 2008](#)
- [MARCH 2008](#)
- [FEBRUARY 2008](#)
- [JANUARY 2008](#)

## TV Cabinets

- [You'll see. The best furniture deals are all listed here.](#)
- [Home improvements](#)  
What do you need? Check out Conservatories, kitchens, double glazing and more. Proven to be of the highest quality on everest.co.uk
- [Buy Portable Bbqs](#)  
Paint cast iron 50/50 grill and griddle. Portable designer BBQ's with style!
- [buy cheap garden trampolines...](#)
- [If you're looking for a good deal for a new trampoline, check out this site's great combination package deals.](#)
- [Novelty beds](#)  
Check out this bed section with some of the finest beds for children that money can buy on bedtrader.co.uk
- [Quote For Conservatory Sunlounger, Edwardian or](#)

## Forms and Volumes

images: Zooley Braun ©  
 IF Group designed this new cafeteria as an alternative to an existing staff canteen. A completely new room was modelled into the older part of the building that once housed an office space. The cafeteria is divided into two main areas. The entrance opens on to a self-service area. A striking solid surface table in propeller form gives a dynamic upbeat and forms the communicative heart of the self-service zone.

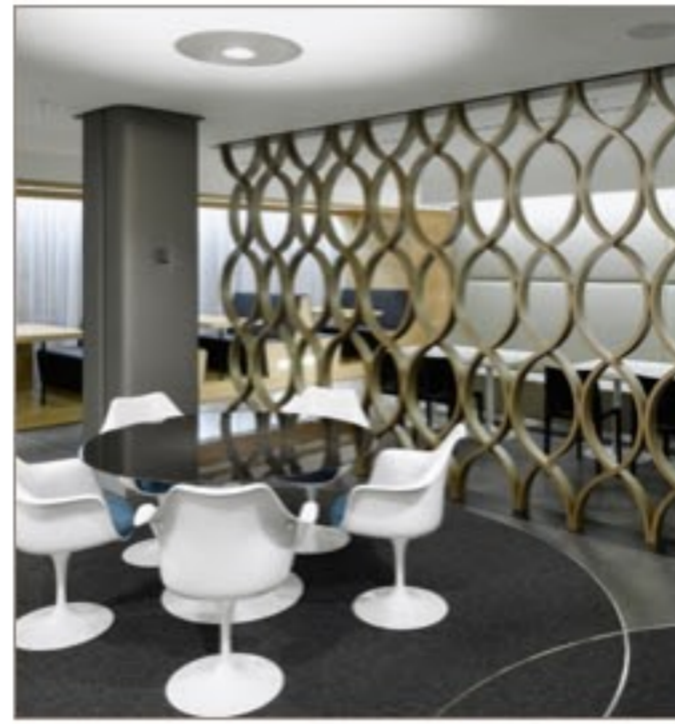
ShareThis

WGV Cafeteria  
**Client** Württembergischen Gemeinde-Versicherung a.G Feinstrasse 1  
 70174 Stuttgart  
**Location** Hauptstatter Strasse 100  
 70174 Stuttgart  
**Year** Mai 2008  
**Size** 400 sq m (91 seats, 12 standing places)  
**Team** Peter Ippolito, Gunter Fleitz, Mathias Modinger, Lena Noh, Tim Lessmann  
**Lighting:** Pfarre Lighting Design, Munchen: Gerd Pfarre, Linda Heller  
**Photography Copyright** Zooley Braun ©  
 Romerstr. 51  
 70180 Stuttgart  
 T +49 (0)711 6400361  
 F +49 (0)711 6200393  
 zooley@zooleybraun.de

## More from the Architects:

A black chain curtain masks the less than attractive exterior view and serves to concentrate the impression created by the interior. The typical cafeteria landscape of vending machines with their heterogeneous frontages is elegantly concealed behind a stainless steel unit. A short corridor leads through to the bistro proper. On the right as you enter is a freestanding cafeteria counter. The floor is made of smooth, medium grey, cast terrazzo, giving the room a fluid and spacious feel. The upholstered anthracite-coloured pillars and corridor walls pick up on another detail from the customer service centre, while at the same time ensuring pleasant acoustics throughout the space. Bistro guests can choose between ranges of seating situations offering different moods. Along one side of the extended entrance corridor is a floating solid surface bar, which is accented by narrow-beam recessed lighting. To the other side of this open corridor leading towards the training centre at the rear, and flanking the entire length of the facade, is a kind of »dining car« made up of eight separate cabinets. Both the seating units of these slightly raised seating groups and the curved ceiling surround are constructed from whitewashed oak. The area functions as a closed unit, also thanks to the white curtain that acts as a daylight filter. The serial rhythm of the cabinets is accentuated by floor lights integrated into the sides of the seating units. The centre of the cafeteria is designated by seven round tables, which are positioned within overlapping circular areas. Domes in the ceiling above each of the table groups are indirectly illuminated by reflective disks. Circles are carved out in the floor with needle felt inlays, enclosed by a stainless steel perimeter. The seating groups thus create a central motif, which gives the room a strong core. A bronze-coloured room filter made from looped wooden lamellae partially conceals a more private seating area. Its seating bank is upholstered in beige, micro-perforated leather and extends up to meet the ceiling, thereby creating a terminal rear wall for the entire room. With its different seating situations, the new cafeteria offers a broad spectrum of spaces for all kinds of communication requirements. It creates both a space for intimate tete-a-tete discussions and for a communal lunch break with your circle of colleagues.

author: Maya Jordan date: 03 November, 2008  
 category: INTERIOR , INTERIOR  
 comments (0) [Post Comments](#) [Send to a Friend](#)



**HOTELS COMBINED**  
 ONE SITE TO SEARCH THEM ALL  
**One site to search them all!**  
 Compare hotel rates from all major reservation websites.

**GETAWAY OF THE WEEK**  
  
**COUSINE ISLAND HOTEL**

**PRODUCT OF THE WEEK**  
  
**STAR CACTUS**

Australian International DESIGN AWARDS  
**2009 CALL FOR ENTRIES**  
 ENTER ONLINE  
[www.designawards.com.au](http://www.designawards.com.au)

**ARCHITONIC**

**archdaily**

**yatzer**  
 designistoshare

**materialicious**  
 just another shelter blog

**noticias arquitectura**

**darco**  
 magazine

**MIMOA**  
 mi modern architecture  
 Prepare your next citytrip by compiling and creating your own personal architecture guide.  
[www.mimoo.eu](http://www.mimoo.eu)