

DreamWork Space:
Corporate Design

DESIGNERBOOKS

- 3XN
www.3xn.dk
- Abad Architetti Srl (Ltd)
www.abad.it
- Arch-group + ABTB
www.arch-group.org
- Architects EAT
www.eatas.com.au
- auCUBO.design|architecture+urbanism
www.aucubo.com.br
- Autoban
www.autoban212.com
- Belzberg Architects
www.belzbergarchitects.com
- Blacksheep
www.blacksheep.uk.com
- Buensalido Architects
www.buensalidoarchitects.com
- Buratti + Battiston Architects
www.burattibattiston.it
- Chrystalline Architect
www.chrystallinearchitect.com
- Coudamy Design
www.paulcoudamy.com
- Desai / Chia Architecture PC
www.desaichia.com
- emmanuelle moureaux architecture + design
www.emmanuelle.jp
- Erginoglu & Çağlar Architects
www.ecarch.com
- Eric Rosen Architects
www.ericrosen.com
- FLATarchitects
www.flatarchitects.nl
- Gerd Priebe Architects & Consultants
www.gpac.de www.gerdpriebe.com
- Group A
www.groupa.nl
- HEAD Architecture and Design Limited
www.headarchitecture.com
- Iosa Ghini Associati
www.iosaghini.it
- Ippolito Fleitz Group – Identity Architects
www.ifgroup.org
- JACKIE-B
www.jackie-b.com
- Jean de Lessard, Designer Créatif
www.delessard.com
- Lyn Rice Architects
www.lrany.com
- Mackay – Partners llp
www.mackayandpartners.co.uk
- Mkdreamdesign
www.mkdreamdesign.com
- Nikolaus Schmidt Design
www.niko.ausschmidt.com
- OPENLAB architects
www.openlabarchitects.com
- Paul Kaloustian Architect
www.paulkaloustian.com
- Perkins Eastman
www.perkinseastman.com
- FLAZMA
www.plazma.lt
- Rottet Studio
www.rottetstudio.com
- ROW // Studio
www.rowarch.com
- schlosser+partner
www.schlosserundpartner.at
- Site02 Architecture
www.s-02.com
- sprikk
www.sprikk.com
- Square One Interiors
www.SQ1.ca
- Studio Kuadra
www.kuadra.it
- Studio27 Architecture
www.studio27arch.com
- Studiofibre
www.studiofibre.com
- Tonkin Zulaikha Greer & Linley Hindmarsh
www.tzg.com.au
- waltritsch a+u
www.studiowau.it
- za bor architects
www.zabor.net
- Zecc Architecten BV
www.zecc.nl
- ZNAK, Loiot Design
www.znak-life.com

Studio Ippolito Fleitz Group

Stuttgart, Germany

Design Agency: Ippolito Fleitz Group – Identity Architects(Germany)

Designer: Peter Ippolito, Gunter Fleitz, Sandra Böhringer, Inken Wellpott, Julian Hensch, Christian Kirschenmann, Mathias Mödinger

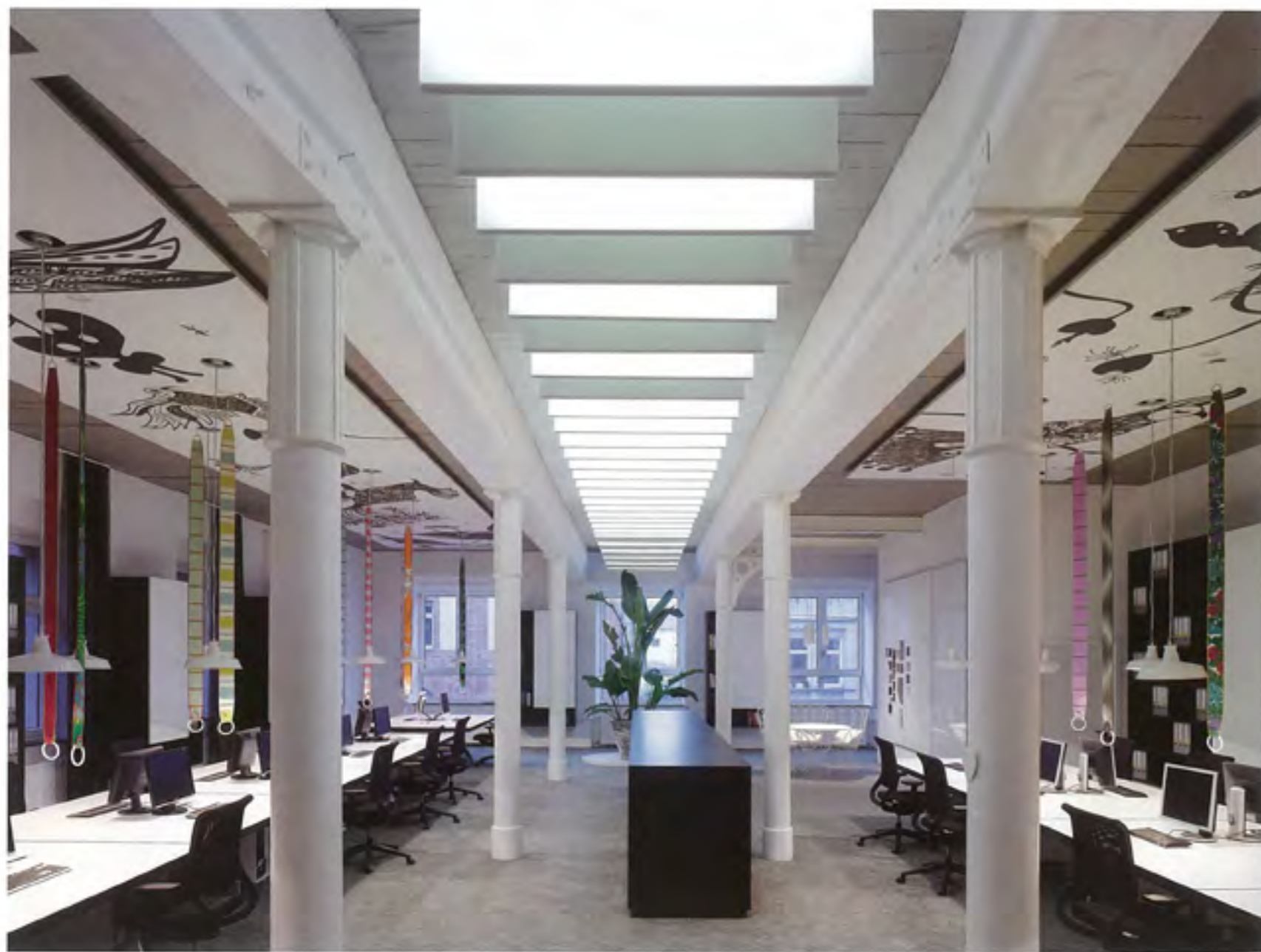
Total Storeys: 1

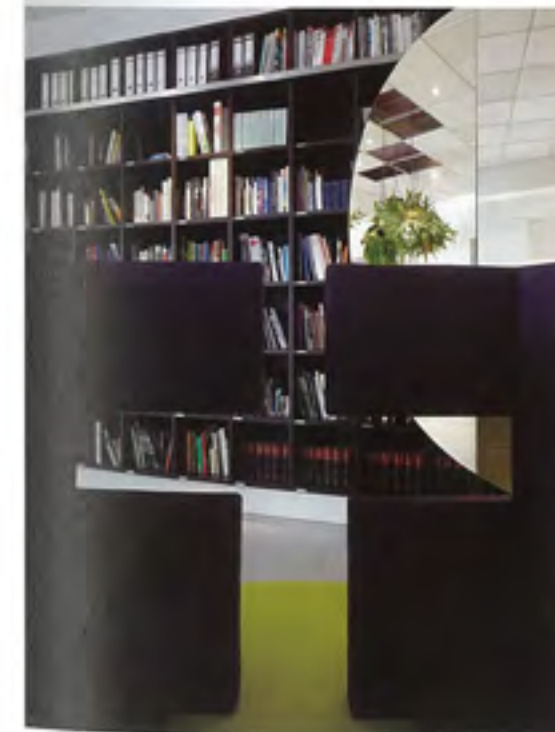
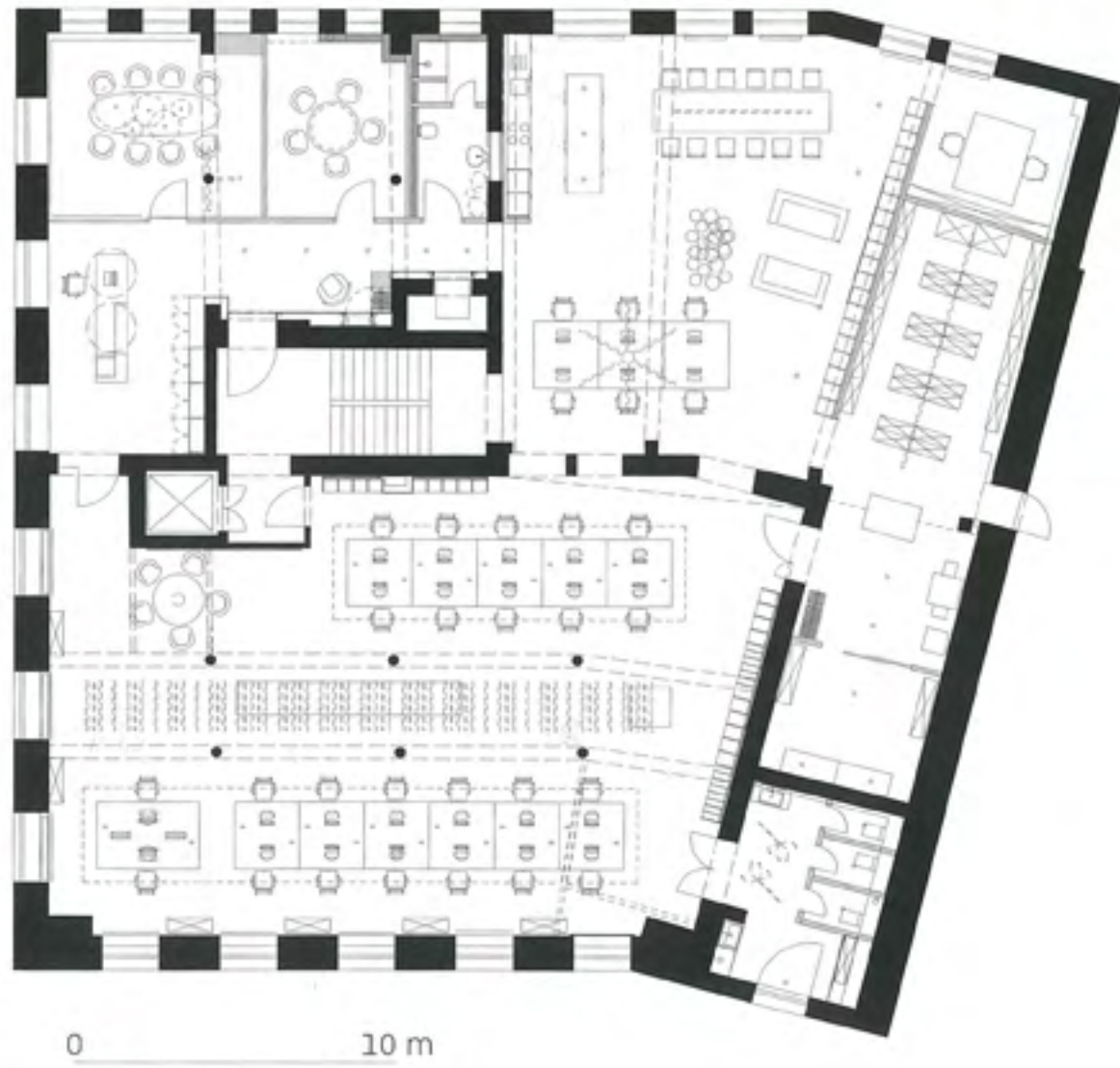
Floor Area: 480sqm

Photographer: Zoocy Braun

Over the past six successful years, the number of co-workers at ippolito fleitz group design studio has grown with its tasks. The architects and communication designers have therefore jointly created for themselves a new place of work on a floor of an old office building. The design of the space is in accordance with their own demanding standard as "identity architects"– the office is to be the hallmark that conveys their identity to both clients and co-workers.

Two long work desks cultivate a creative and communicative atmosphere. Shelves and furniture are executed in white or dark wood. Contrasting accents of colour are set by textile bands above the workplaces that serve as light switches, and the areas of green plants. In addition to two conference rooms, cheerful communication islands are available for discussions. The studio with spacious kitchen and oversized mirror is a place of both inspiration and relaxation.









Weissraum Dental Surgery

München, Germany

Design Agency: Ippolito Fleitz Group GmbH
- Identity Architects(Germany)

Designer: Peter Ippolito, Gunter Fleitz,
Sherief Sabet, Axel Knapp, Frank Faßmer,
Liang Li

Total Storeys: ---

Floor Area: 208sqm

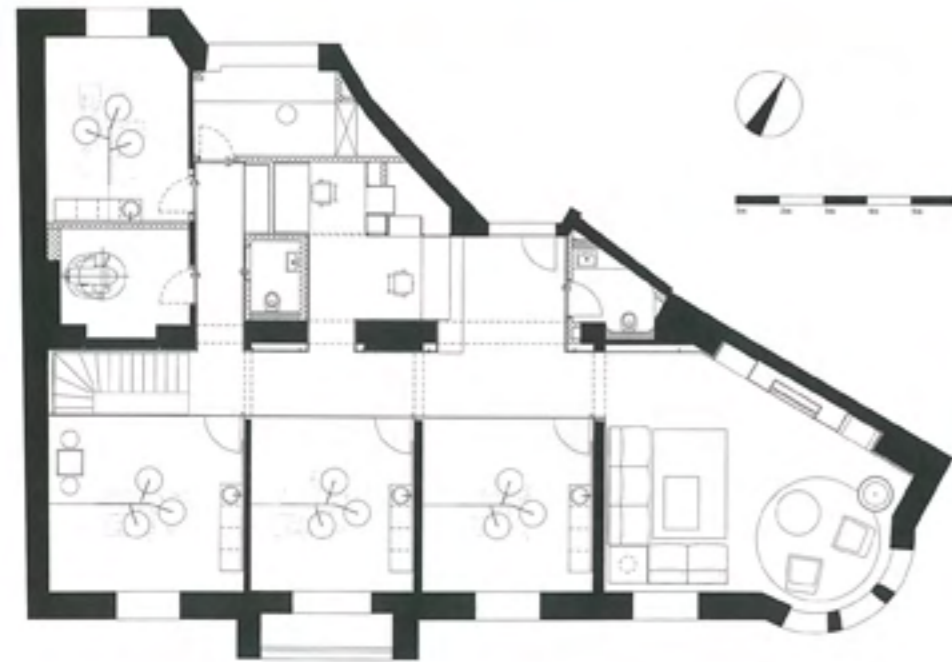
General Contractor: Riedl Messe-/Laden- &
Objektbau GmbH, Pfaffingen

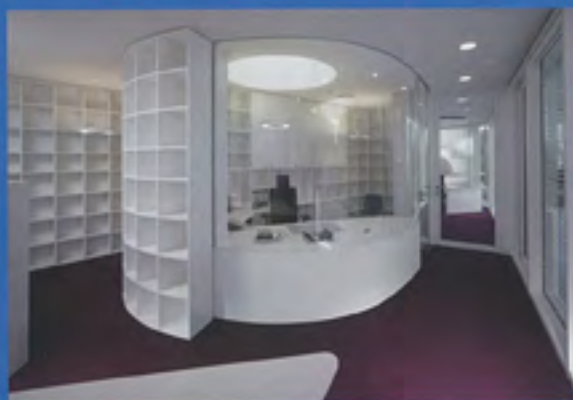
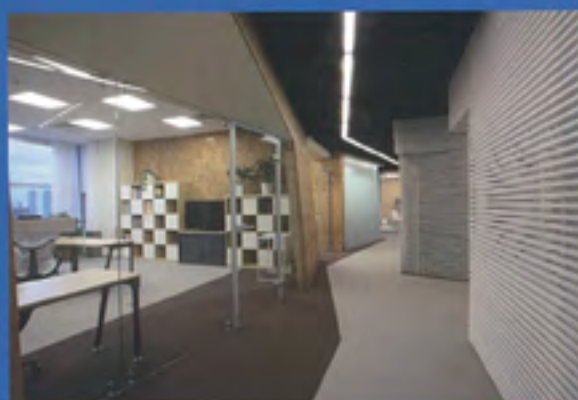
Photographer: Zooney Braun

The dental practice occupies the belle étage of an art deco residential building with impressive ceiling heights and magnificent stucco ceilings. The interior design was careful to treat the historical substance of the building with respect.

The newly integrated units have been treated to a coat of the eponymous colour. The wall units form a homogenous band running through the entire practice: from the staircase, along the hallway and into the waiting area.







ACKNOWLEDGMENT: 3XN / Abad Architetti Srl (Ltd) / Arch-group + ABTB / Architects EAT / auCUBO.design | architecture+urbanism / Autoban / Belzberg Architects / Blacksheep / Buensalido Architects / Buratti + Battiston Architects / Chrystalline Architect / Coudamy Design / Desai / Chia Architecture PC / emmanuelle moureaux architecture + design / Erginoğlu&Çalışlar Architects / Eric Rosen Architects / FLATarchitects / Gerd Priebe Architects & Consultants / Group A / HEAD Architecture and Design Limited / Iosa Ghini Associati / Ippolito Fleitz Group - Identity Architects / JACKIE-B / Jean de Lessard, Designer Créatif / Lyn Rice Architects / Mackay + Partners llp / Mkdreamdesign / Nikolaus Schmidt Design / OPENLAB architects / Paul Kaloustian Architect / Perkins Eastman / PLAZMA / Rottet Studio / ROW // Studio / schlosser+partner / Site02 Architecture / sprikk / Square One Interiors / Studio Kuadra / Studio27 Architecture / Studiofibre / Tonkin Zulaikha Greer with Linley Hindmarsh / waltritsch a+u / za bor architects / Zecc Architecten BV / ZNAK, Lolot Design

ISBN 978-998-19564-1-5



9 789881 956415

www.designerbooks.com.cn
edit@designerbooks.com.cn