



深圳市创扬文化传播有限公司 编

DAZZLING NIGHT

DESIGN PHILOSOPHY
ABOUT NIGHT CLUB

夜炫——夜总会的设计哲学

大连理工大学出版社

BAR FOU FOU

FouFou 酒吧

设计师 / Peter Spornis, Günter Fietz, Ten Linsen, Heide Sakayis, Yvett Peng
 设计公司 / spornis Fietz Ormsby Architects
 项目地点 / 德国斯图加特市 建筑面积 / 102 平方米 摄影师 / Zooey Braun E-mail: z00ey@z00eybraun.de



The FouFou is a champagne bar situated at the very edge of Stuttgart's red light district. Opening onto a small square, it occupies a corner of the building that formerly housed an antique shop. The interior design was inspired by the building's location and history. The FouFou makes optimum use of the limited space at its disposal: four separate salons, each with its own unique character.

You enter the FouFou straight into an L-shaped barroom arranged around a large bar counter. Mirrors affixed to the wall behind the bar expand the space

further still. The bar itself is upholstered in a metallic greenish-gold diamond pattern, which is continued on the ceiling in the rear area of the barroom. The bar can be opened up to the outside during the summer, enabling customers to be served outside. A continuous bench runs along the outer wall of the bar area, enabling maximum use of the limited space. At the rear of the room is a newly constructed, enclosed stairwell.

The Red Salon is located on the upper floor. Here the smooth floor of the barroom changes into thick pile carpet,

The room is divided down the center by two listed sections of wall after refurbishment. Bronzed mirrors mask this incision, creating a fascinating spatial perception. This salon is dominated by a capacious, upholstered bench that runs around its three sides. The ceiling is decorated by a lighting installation of semi-mirrored, golden light bulbs spanning the longitudinal axis of the salon, thereby conjoining both halves of the room. The brass colour of the lights is further reflected in the hexagonal occasional tables.





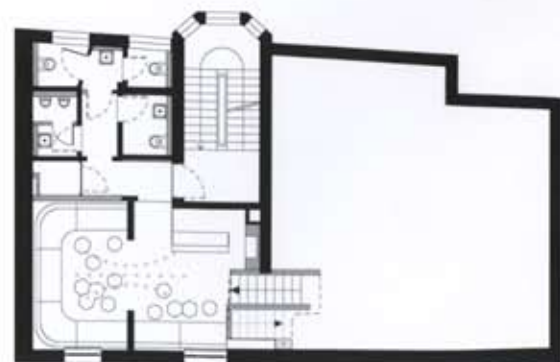
FouFou是一个坐落在斯图加特红灯区边缘的酒吧。它的门正对着一个小广场，占据了大楼的一角，以前是一家古玩店。室内设计是受大楼的位置和历史的启发。FouFou使有限空间资源的利用最大化；有四个单独的沙龙，每一个都有其独特的特色。

直接进入FouFou“L”形的酒吧间，这里布置了一个大型的吧台。酒吧背后的墙壁是用镜面装饰的，使整个空间变得开阔了。酒吧本身被布置为金球色金属质地的表皮，这种表皮一直延伸到酒吧间背部的天花板上。酒吧在夏季设有外部场地，使得顾客能在户外享受到服务。在酒吧的外墙处设有一个沿墙的长凳，能最大化利用其有限的空间。在吧间的后面有一个新建的封闭式的楼梯井。

红色的沙龙位于上面的楼层。酒吧间光滑的地板在这里变成了厚厚的地毯。空间在重修以后从中心分开，用两个墙的截面隔离开来。铜镜掩饰了这个切口，营造了一种迷人的空间感受。这个沙龙有一个大的、装有软垫的长凳，围绕着周围的三面墙布置。屋顶是由半镜面、金色灯泡的照明设备横跨沙龙纵轴装点而成的，因此连接了两个空间。黄铜色的灯光映照在六边形临时用的小桌子上。



项目一层平面图



项目二层平面图

