

- WAF Awards
- Enter your project
- Download entry guide
- Sign up for updates
- Open FREE WAF account
- World Buildings Directory



World Architecture Festival Barcelona 3-5 November 2010

Priority code, please quote: [09796E05EM33](#)

New identities and green solutions for two exciting public spaces

Enter today - deadline is 2 July.

Dear Wieland,

Interiors and Fit Out - Culture and Civic category - Uzbekistan

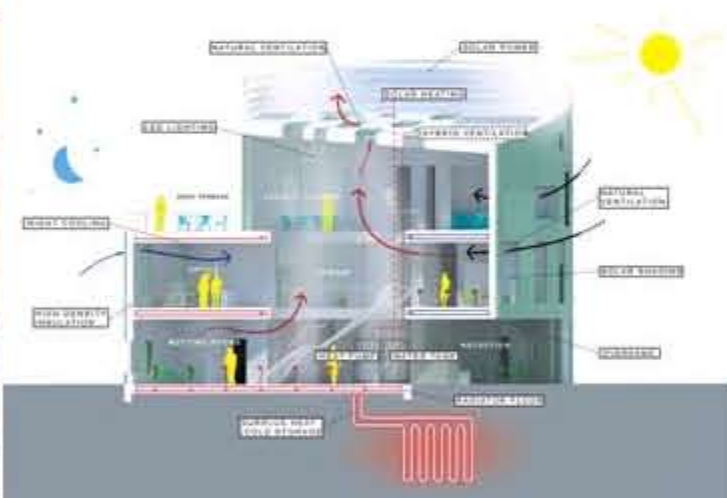
Peter Ippolito of Ippolito Fleitz Group GmbH based in Stuttgart has entered the refit of **The Palace of International Forums** in Uzbekistan to the **Interiors and Fit Out** section of the **Culture and Civic** category in the **World Architecture Festival Awards**. The palace stands on **Amir Timur Square** in the very center of **Tashkent** and is the country's most important representative building acting as a platform for hosting acts of state, congresses, conferences and other cultural highlights.

They were tasked to give the interior, with a net external area of 33.700 sqm, a contemporary form, while incorporating elements from traditional Uzbek architecture. The result is a cosmopolitan, communicative interior clothed in exclusive materials. Planar ornamentation, organic movement, crystals, precious metals and a fascinating interplay of artificial and natural light all become a source of inspiration. Ornamentation is applied throughout the building in a diverse variety of possibilities and materials to provide stylistic elements of the country's culture.



Learning - University and Culture category - Denmark

Entering the **Learning- University and College** category are **Christensen & Co Architects** with Denmark's first carbon neutral building. **The Green Lighthouse** is a faculty building at the Faculty of Science at the **University of Copenhagen**. The building has multiple purposes including teaching facilities, student advisory, administration and faculty lounge. It demonstrates that sustainable design is not a question of stuffing the building with brazen, expensive high-tech gadgets, but that it starts with good old fashioned common sense.



To achieve carbon neutrality, **Green Lighthouse** has a number of green design features incorporated to reduce energy use and provide a holistic and healthy indoor environment for students and faculty. The building itself was oriented to maximize its solar resources, while windows and doors are recessed and covered with automatic solar shades to minimise direct solar heat gain inside the building. Plentiful daylight and natural ventilation are provided by means of the skylights and windows and the generous atrium. Finally, sensibly integrated state-of-the-art technology has been applied: heat recovery systems, photovoltaic panels, solar heating, LED lighting, phase change materials and geothermal storage are just some of the technologies that are seamlessly integrated into the buildings.

From ambulance stations to universities, private houses to shopping centres, there is a specific building type for your entry, meaning all projects are judged against similar buildings and stand an excellent chance of being shortlisted and secure your platform in front of world's greatest architectural visionaries which this year include **Arata Isozaki**, **Barry Bergdoll**, **John Patkau**, **Daniel Bonilla**, **Isay Weinfeld** and **James McAdam**. [Download the event guide today for more information.](#)

With over **100 buildings covered** and **47 awards to be won**, **WAF** is your chance to compare and contrast the extraordinary range of designs created by a profession which has always looked beyond national borders to the wider world of architectural culture. [Enter today - just days until the deadline of 2 July.](#)

Yours sincerely,

Paul Finch
Chair, **The Commission for Architecture & the Built Environment**
Programme Director, **World Architecture Festival**

Get in contact today and quote your priority code - **09796E05EM33** - which may entitle you to a discount.

T: +44 (0) 20 7554 5800
E: info@worldarchitecturefestival.com
W: www.worldarchitecturefestival.com

P.S. Look out for tomorrow's email that showcases two more inspiring pieces of architecture - providing regeneration in New Zealand and an ambitious masterplan for a historic urban centre in Saudi Arabia.

P.P.S. Make the decision to [attend WAF today and save €550 on two tickets](#) at the point of entry when you purchase the entry package for €995.

www.worldarchitecturefestival.com



Headline Sponsor



ARCHITECTURAL RECORD