



Chris van Uffelen

Living Style

in

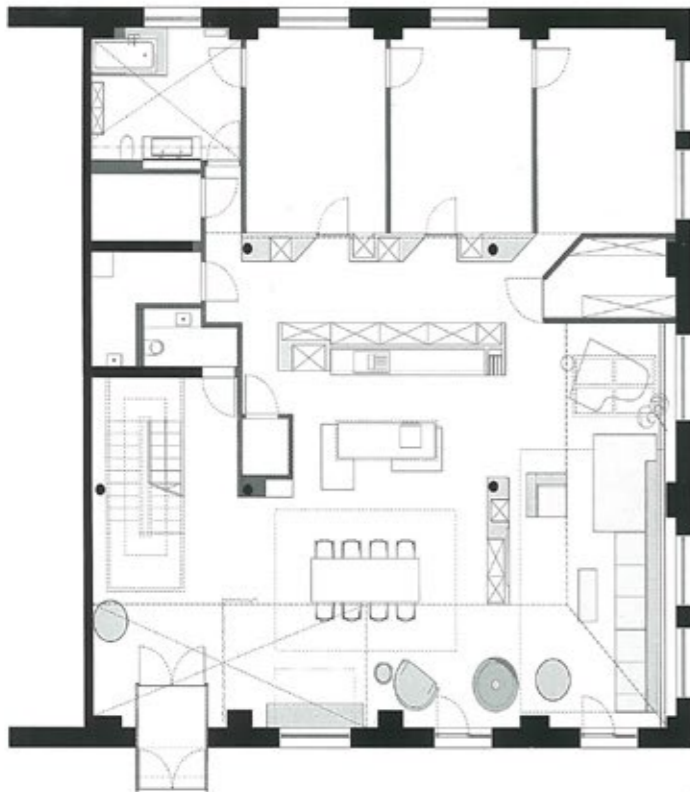
Architecture + Interiors



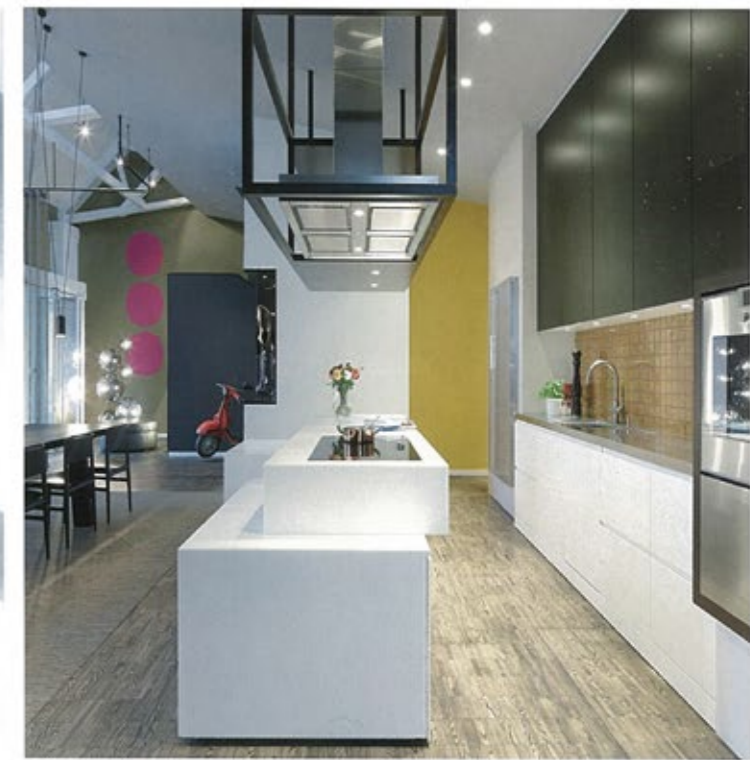
BRAUN

LOFT ESN

An Alice in Wonderland living landscape of floating lighting elements, kitchen units stacked like building blocks, fluffy carpets and mirrored walls.

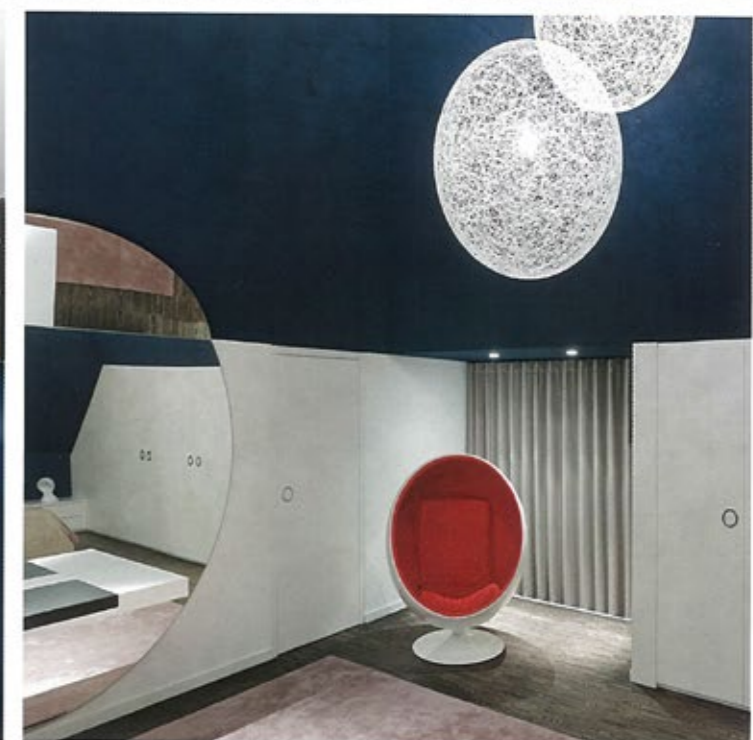
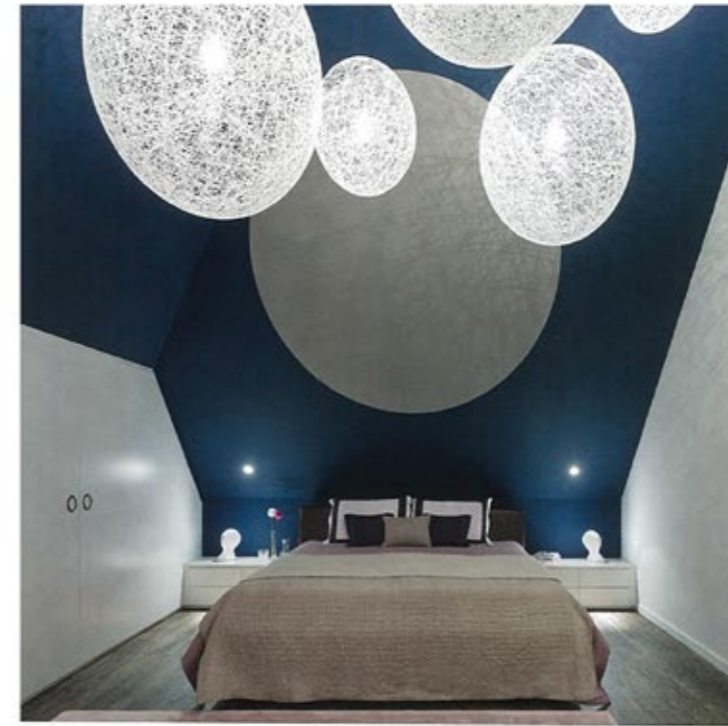


80.5 m² living
82 m² sleeping
17.75 m² kitchen
45.5 m² bathrooms
25 m² entrance area



Interior design | Ippolito Fleitz Group – Identity Architects
Gross floor area | 347.5 m²
Address | Esslingen, Germany
Completion | 2012
Number of residents | 2 adults, 2 children

As one enters this loft, the room opens out not only horizontally but also vertically. The living and entrance areas are separated by just an L-shaped curtain partition. The dining area is the central focus of the design. The open kitchen is characterized by the arrangement of stacked cubes and rectangles. A sliding partition separates the living and dining areas. The upper floor is reserved for the parents. A house-in-a-house concept houses the bedroom because the client desired a completely dark space. The floating light drops in the bedroom illuminate the space and connect the collage-like objects and rooms to form a poetic landscape.



Warm natural materials and colors, including dark parquet flooring, the earthy tones of the walls and curtains, as well as gold surfaces are carefully complimented with pink sections, cubes of mineral materials or glazed surfaces.