

INTERIOR DESIGN[®]

DECEMBER
2013

best of year

A man in a light-colored shirt and dark shorts is walking away from the camera down a central aisle in a theater. The theater's walls are covered in large, rectangular panels of a vibrant green color, with several small, dark square recessed lights. The seats are arranged in rows on both sides of the aisle, with some seats having a grey and white striped pattern. The overall atmosphere is modern and dramatic.



Exp US Services

project Minton-Capehart Federal Building, Indianapolis.
standout A renovation meant restoring the lobby's striped mural with pulsing lights and installing wall-size portraits of Supreme Court Justice Sherman Minton and Senator Homer Capehart.



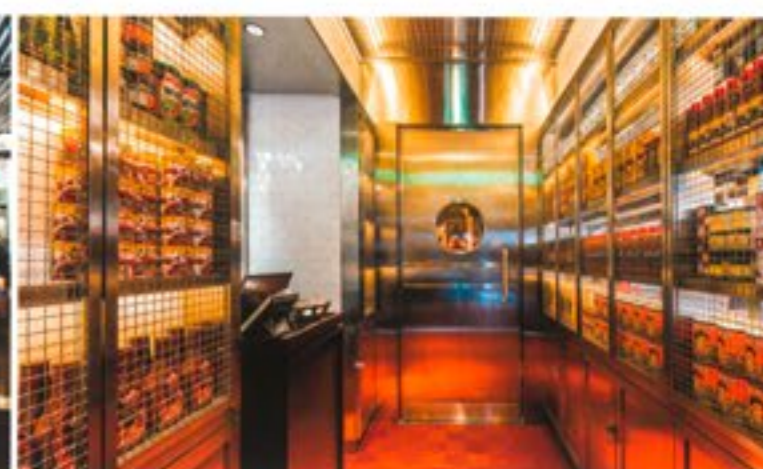
Ippolito Fleitz Group

project Waku Waku, Hamburg, Germany.
standout Rough fit for walls and storage was left unfinished to underscore the ecological commitment of a fast-casual concept serving sustainable food.



Ippolito Fleitz Group

project Rathaus Schorndorf, Germany.
standout Behind a landmarked 1730 facade, a total redesign of the ground level resulted in a refreshingly contemporary council chamber distinguished by an undulating drywall canopy.



AvroKo

project Socialito, Hong Kong.
standout The storefront taqueria, a riff on taco trucks, is the teaser for a swank rear dining room and nightclub, reached via a staged "pantry" and an open kitchen.



Andrew Berman Architect

project Opera America, New York.
standout Removing part of a floor slab from a century-old high-rise garment factory gave this music nonprofit a double-height performance space.



Supermaniac

project Tokyo Kushi Bar.
standout Columns of thermoformed solid-surfacing, softly glowing from internal LEDs, rise from the urethane-coated wooden counter of the stand-up kushikatsu bar.

FROM TOP: STEPHANIE PHOTOGRAPHY / PZL; JERRY BRAUN / ELLI; MARIO PERAZZOLI / IZ