

Chris van Uffelen

# Offices



BRAUN



**Address:** Schwabstraße 43, 70197 Stuttgart, Germany. **Client:** sbp GmbH. **Completion:** 2011. **Gross floor area:** 2,500 m<sup>2</sup>. **Number of work stations:** 110. **Lighting:** exterior sunshading, interior visor. **Climatization:** centralized building services, ceiling components. **Types of offices:** individual, group, open-plan, combi-office, business club. **Conference rooms:** 2/10 people. **Restaurants:** 1/40 people. **Other rooms:** exhibition space, library, casino, kitchen. **Setting:** urban.



## schlaich bergemann und partner Headquarters

Stuttgart

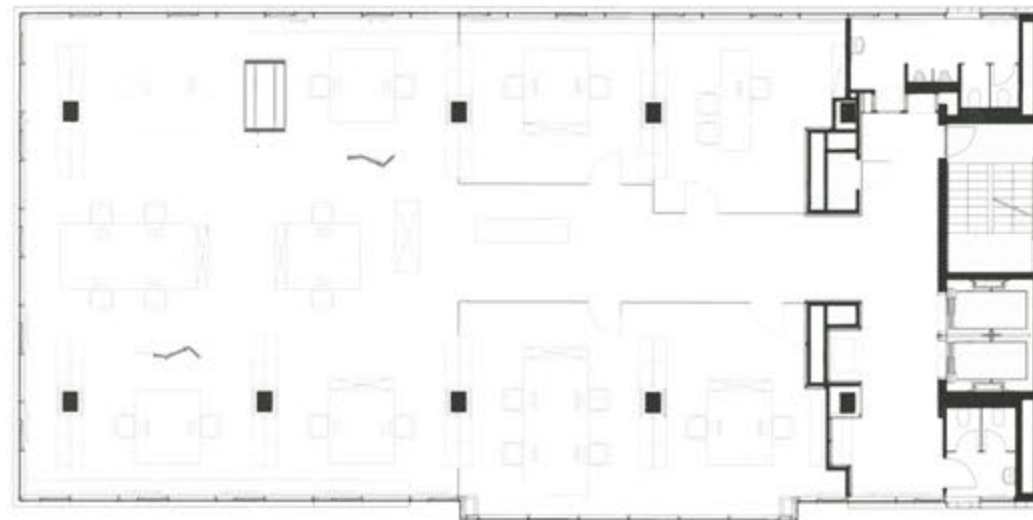
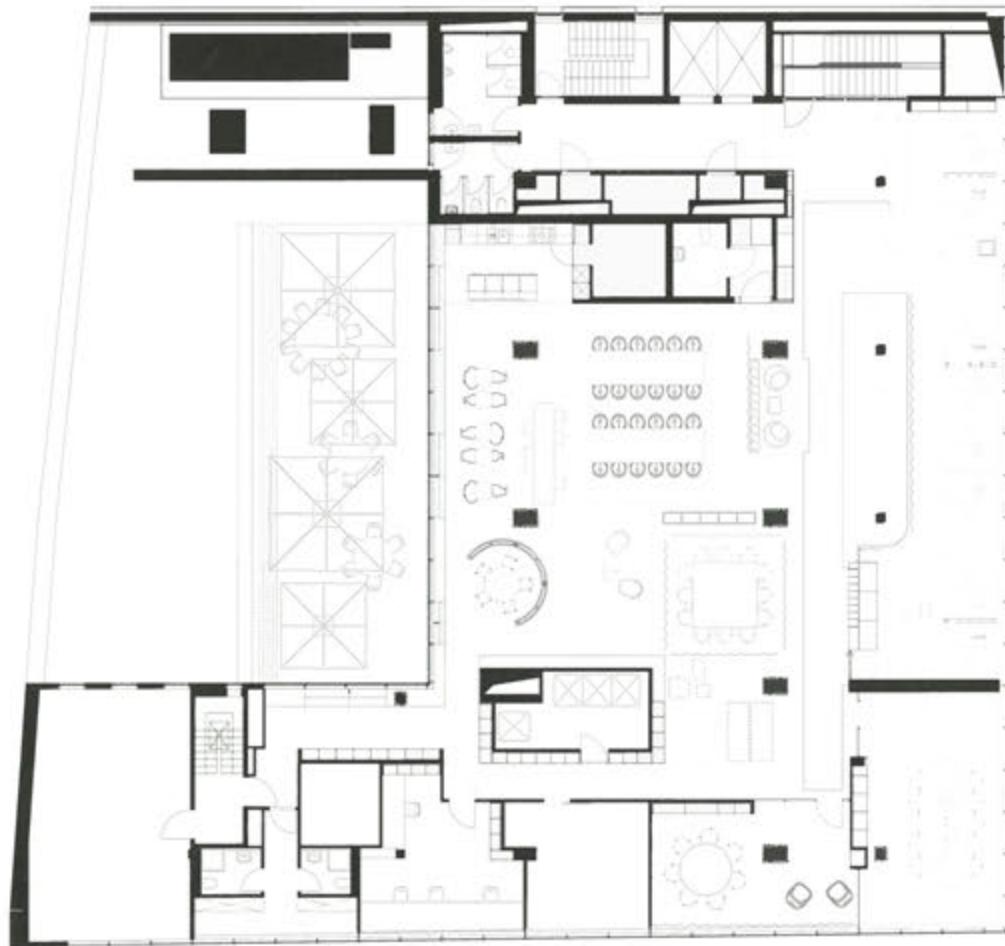
The main Stuttgart headquarters of the prestigious engineering firm schlaich bergemann und partner have relocated, completely changing the operative and communicative structures within the company. An aesthetic world cites the precision and technical connotations of the engineering profession. While warm materials and a collage of communication zones with different moods create a place where one can feel at home. Work processes now take place in open-plan offices to promote collegial exchange. And varying floor plans on each floor create diverse office environments. Cruciform elements divide the open-plan areas into individual units that allow a concentrated work climate.

↑ | Glass façade, connects interior and exterior  
 ✕ | Conference area, partially transparent  
 latticework curtains suggest a semi-private space  
 → | Seating area, provides place to meet





↑ | Wide working environment  
 ← | First floor plan



↖ | Third floor plan  
 ↓ | Individual offices, glass façades run along longitudinal axes creating varied spatial landscapes

